

# MeshLabs eZi CORE™

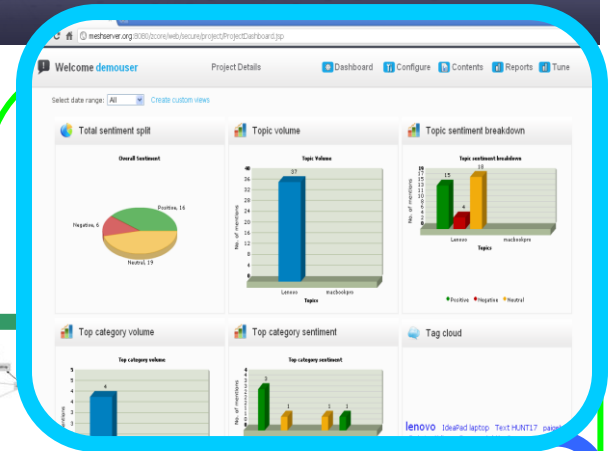
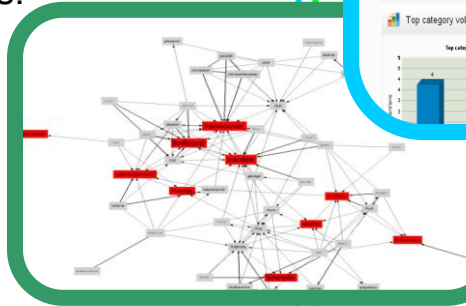
## Enterprise Text Analytics Engine

Today's businesses are challenged with managing ever increasing volume of complex and disparate information assets. Users need smart and simplified solutions to find the right information for actionable insights.

Organizing information by automatically understanding the underlying concepts is the fundamental step towards developing the right information management solution. This lays the foundation for a new breed of solutions to solve customer experience, business intelligence, regulatory compliance, and a host of other business problems. Investment in a product such as MeshLabs eZi CORE™ is the right step towards achieving your objectives.

MeshLabs eZi CORE™ is a powerful text analytics and semantic engine that automatically classifies and categorizes large volume and variety of content into concepts. It also identifies linked relationships among these concepts.

By bringing together a variety of promising and proven technologies in linguistics, statistics, and semantics, eZi CORE™ has been developed ground-up as a hybrid engine that delivers superior and differentiated results. The proof is in its high measurements for accurate categorization of concepts, relationships, and sentiments.

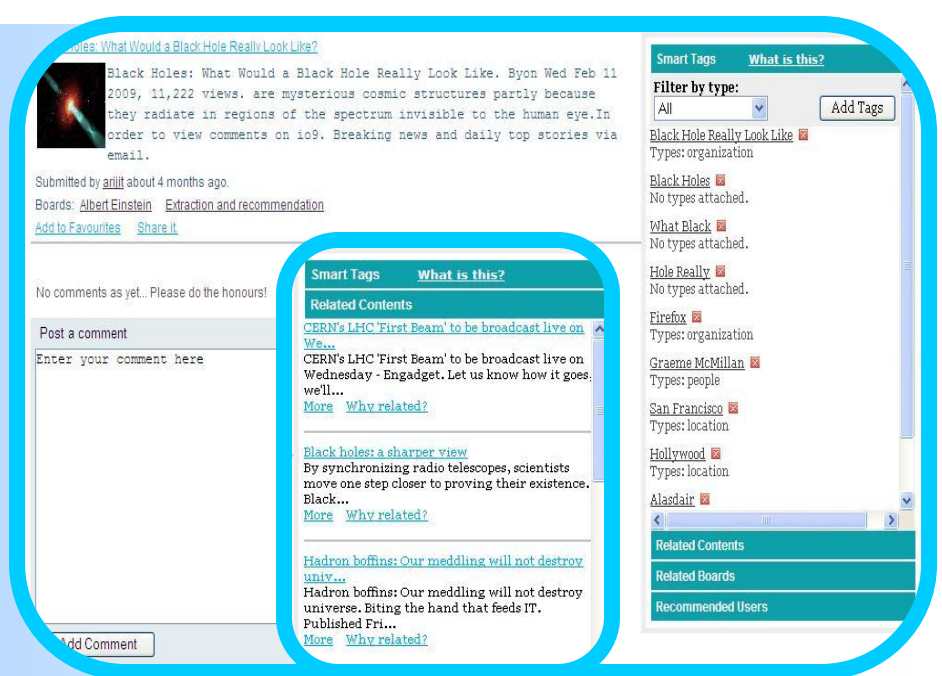


### Benefits

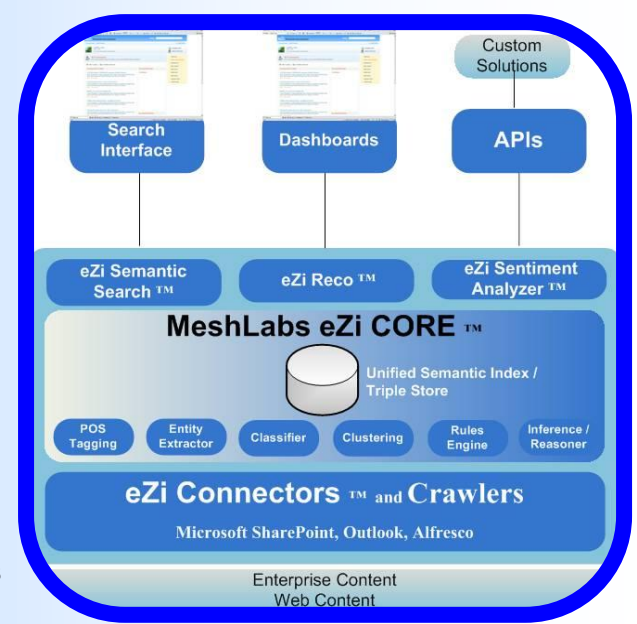
- Automatic categorization, organization, and tagging of your information based on underlying concepts
- Enables your information for powerful search and knowledge discovery
- Logically links all your information assets without reengineering
- Lays foundation for a range of solutions to solve a variety of business problems
- Easy integration - Web Services or API based
- Best-in-class ROI

## Key Features

- **Entity Extraction:** Identifying People, Places, Companies, Products, and other specific entities
- **Relationship Extraction:** Identifying relationships among entities such as people and job titles; people, products, and companies
- **Content Summarization:** Automatic generation of abstracts from relevant information in content sources
- **Interest Identification:** Understand, track, and predict user/community interests; identify experts
- **Content Acquisition:** Gather content from a variety of information sources, both internal and external, through configurable connectors for enterprise content stores such as Microsoft Sharepoint.
- **Automatic Tagging:** Automatic generation of ontology or taxonomy map
- **Custom Ontology:** Option of plugging-in domain or enterprise specific ontology to drive extraction
- **OS:** Linux 4 and 5; Solaris 9/10; Win 2003, 2008, XP SP2
- **Storage:** Triple Store (RDF/OWL) or RDBMS
- **Security**
  - Extensible role-based security
  - Directory (LDAP) permissions inheritance
  - Auditing
- **Administration:** Secure Web-based administrator interface
- **APIs and Integration:** Java, XML, SOA(SOAP), RSS feeds
- **Developer Support:** Performance Profiling / Benchmarking



- **Advanced Sentiment Analysis:** Linguistic based, concept-level custom sentiment scoring that goes beyond keywords
- **Auto Classification and Clustering:** Advanced algorithms to tackle complex classification and clustering problems



**MeshLabs Software Private Limited.**  
 CA Site No.1, HAL 3rd Stage,  
 Behind Hotel Leela Palace, Kodihalli, Karnataka - India

MeshLabs develops text analytics software to solve information management, customer experience, business intelligence, and regulatory compliance problems. Our solutions are built using the most promising emerging technologies in the areas of text mining, semantic analysis, natural language processing, human-machine synergy, enterprise 2.0, and social networking. Our current focus industries include travel, hospitality & entertainment, manufacturing, media, publishing, financial services, professional services, and life sciences.

MeshLabs is headquartered in Bangalore, India with offices in the United States.

© Copyright 2011 MeshLabs Software Private Limited. MeshLabs eZi CORE™ is a trademark of MeshLabs Software Private Limited, All rights reserved. All other product names mentioned herein are the property of their respective owners.

REV 010111

**www.meshlabsinc.com**  
**sales@meshlabsinc.com**  
**+91-80- 25200916**  
**+1-602-617-9370**

